

#HELPBUILDA  
BETTERBRAMS



Broome  
Regional Aboriginal  
Medical Service

# BUILDING A HEALTHIER FUTURE with a new clinic

Our Vision for Healthy People  
and a Strong Community



**Broome  
Regional Aboriginal  
Medical Service**

**#HELPBUILDBETTERBRAMS**

# CONTENTS



**Broome  
Regional Aboriginal  
Medical Service**

*We care for you*

**A Message from Cassie Atchison ..... 3**

CEO of Broome Regional Aboriginal Medical Service (BRAMS)

**Why Our Current Building Falls Short ..... 4**

A Clinical Perspective..... 4	Limited pathology services..... 9
Insufficient space ..... 4	Pandemic risk..... 10
Poor wheelchair accessibility ..... 6	No room for respiratory ..... 11
Lack of privacy ..... 7	Structural issues..... 12
Not family - friendly..... 8	Walls ..... 13

**The Vision for a Healthier Future ..... 14**

**Proposed Floor Plan ..... 16**

Our vision is for world-class healthcare delivered in state-of-the-art facilities.

**Serving the Community ..... 19**

BRAMS in brief..... 19	Employment..... 19
Doctors ..... 19	Patients..... 19

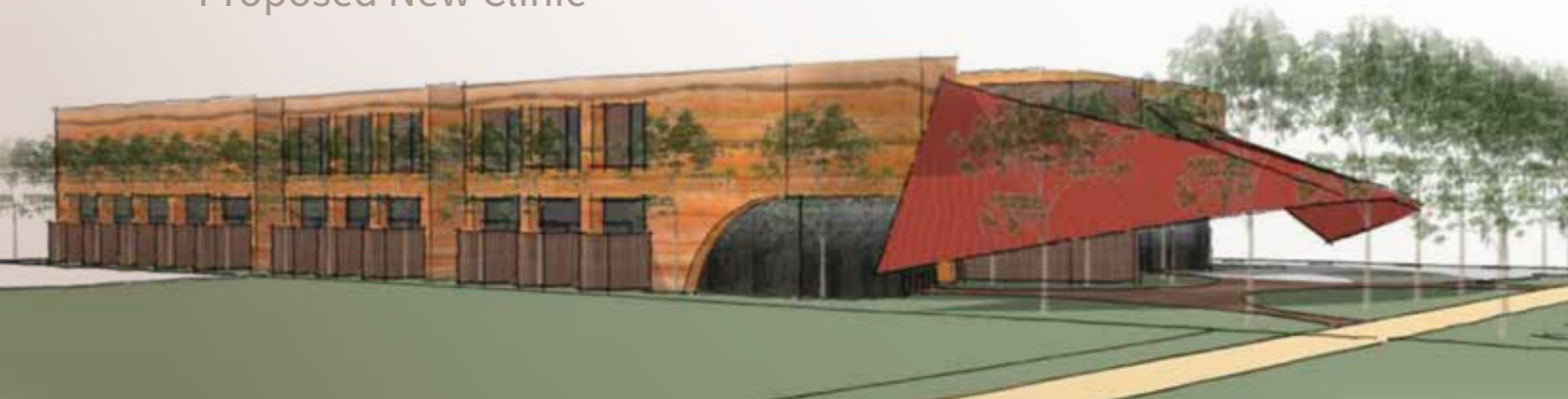
**How you can make a difference ? ..... 20**

Dora Street Existing Building



“Our vision is for world-class healthcare delivered in state-of-the-art facilities.”

Proposed New Clinic



#HELPBUILDABETTERBRAMS



BUILDING  
A HEALTHIER  
FUTURE



## A MESSAGE FROM CASSIE ATCHISON

CEO of Broome Regional Aboriginal Medical Service (BRAMS)

Dear friend,

Please take a moment to read our story.

It's about a health service that has been caring for the Broome community for more than 45 years.

From proud beginnings as the first remote Aboriginal Medical Service in Western Australia, BRAMS now provides a full range of primary health and wellbeing services, including NDIS and Aged Care.

Unfortunately we've outgrown our current premises; in some places, our building is literally falling apart. As you'll see in the pages that follow, this is impacting our ability to deliver high-quality and culturally-safe services to our patients.

We're in desperate need of a new clinic. In addition to providing modern, fit-for-purpose facilities, a new clinic will enable BRAMS to continue to grow and meet the needs of the local community.

To help realise this vision, we have secured land, and engaged architects to draft plans for the new building. In addition to seeking funding through the Commonwealth and WA governments, we are also hoping you will help bring this critical project to life.

BRAMS is looking for partners, donors, and ambassadors to champion our cause, and join us on this journey to a healthier future for Aboriginal and Torres Strait Islander people in the Kimberley.

Your sincerely,

*Cassie Atchison*

CEO, BRAMS



Today



January 2023

#HELPBUILDABETTERBRAMS

## WHY OUR CURRENT BUILDING FALLS SHORT

### A Clinical Perspective

Addressing these clinical issues is paramount to providing the highest quality healthcare services to our community.

### INSUFFICIENT SPACE

Lack of consult / treatment space for child health teams, Aboriginal health workers, and visiting and allied health specialists reduces quality of care.



Small rooms



Small consult rooms

### STAFF COMMENT

“ Patients walk from the main building through the carpark in the heat and rain. The ground is uneven and dangerous. ”



Outgrown building



Unwelcoming entry



Not enough carparks



Outside waiting areas



Cramped offices

## POOR WHEELCHAIR ACCESSIBILITY

Narrow corridors, sharp corners, and small doors hinder wheelchair accessibility, making patients feel uncomfortable and undignified.

### STAFF COMMENT

“It’s frustrating sometimes as you can’t pass two wheelchairs or walkers in the hallway.”



Worn interior



Narrow hallways



Limited space for waiting families



Hallways as storage

## LACK OF PRIVACY

Thin walls compromise patient and healthcare worker privacy, and the safety of sensitive information.

### PATIENT COMMENT

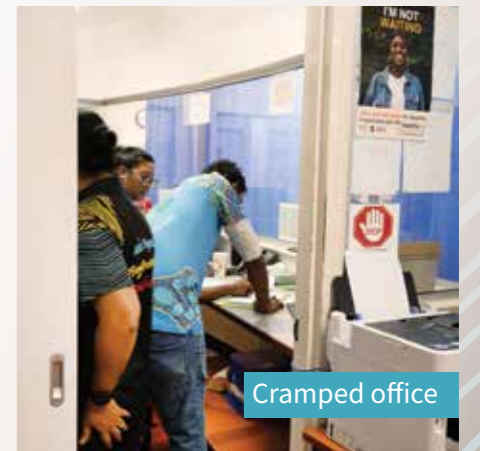
“It’s very noisy. We have to wait sometimes to get in. A bit squasy in some rooms.”



Crowded treatment areas



Cramped office



No privacy

## NOT FAMILY - FRIENDLY

Size of consult rooms cannot accommodate larger families or multiple patients.

### STAFF COMMENT

“ Families are crowded in tiny rooms. It's not comfortable. The walls and ceilings are damaged from wear and tear. It would be good to have some engaging equipment for the children who are waiting. ”



Cramped consult rooms



Lack of privacy & deteriorating structure



Outside patient toilets



Small child health area

### PATIENT COMMENT

“ It's a bit open to everyone and I seem to be sitting in and around medical stuff. ”

## LIMITED PATHOLOGY SERVICES

BRAMS only has room for one pathology bay, instead of the three required for a clinic our size.



Cramped consult room used as storage



No privacy pathology patient area



Limited Storage

## PANDEMIC RISK

The layout hinders patient flow during a pandemic, limiting our ability to minimise the spread of infectious diseases.

### STAFF COMMENT

“ We want to welcome our patients into a safe and caring environment. ”

### PATIENT COMMENT

“ Yeah, I've been coming here for years and it could use a bit of TLC. ”

## NO ROOM FOR RESPIRATORY

There's no space for dedicated respiratory rooms equipped with proper storage for PPE, to safely manage respiratory illnesses.



## STRUCTURAL ISSUES

The ceiling is failing in multiple rooms, posing safety and operational risks.

### STAFF COMMENT

“ BRAMS has outgrown its current clinic and is definitely in need of more space and repairs. ”

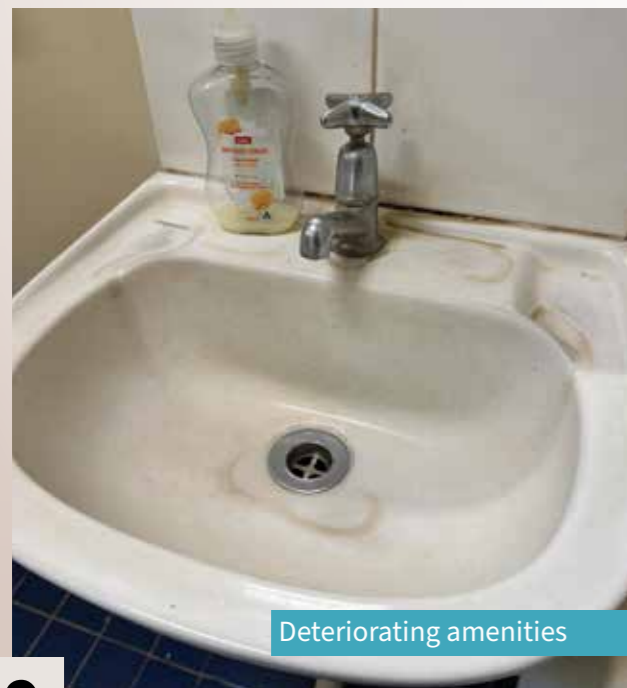
”



Water damage



Fittings falling apart



Deteriorating amenities



Water damage



## WALLS

Poor fixture mounts lead to continual breakages, requiring constant and costly maintenance.

### PATIENT COMMENT

“ I have always liked coming here but it gets crowded in the waiting room sometimes. ”

”



Unusable consult rooms



Cracking walls



Hole in floor



Portable buildings deteriorating

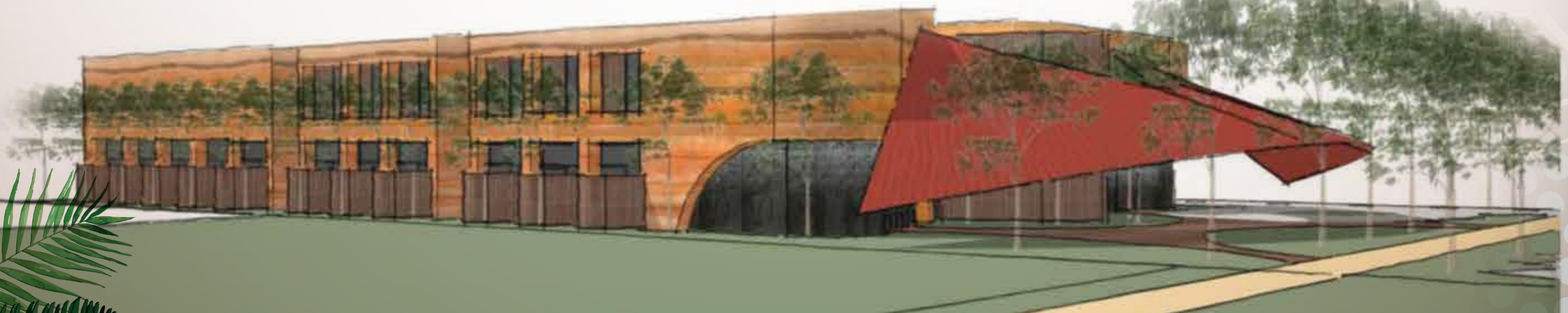


## THE VISION FOR A HEALTHIER FUTURE

BRAMS has secured land for a new clinic at 33 Weld street in Broome, and engaged Kaunitz Yeung Architecture to draft concept design drawings.

In addition to providing modern, purpose-built health facilities, a new and expanded clinic will allow BRAMS to extend its operating hours to 7pm on weekdays, and be open on weekends.

It will also enable us to grow our services even further.



Our vision is for world-class healthcare delivered in state-of-the-art facilities.



A PLACE FOR COMMUNITY



LOCAL MATERIALS



INTEGRATION OF ART

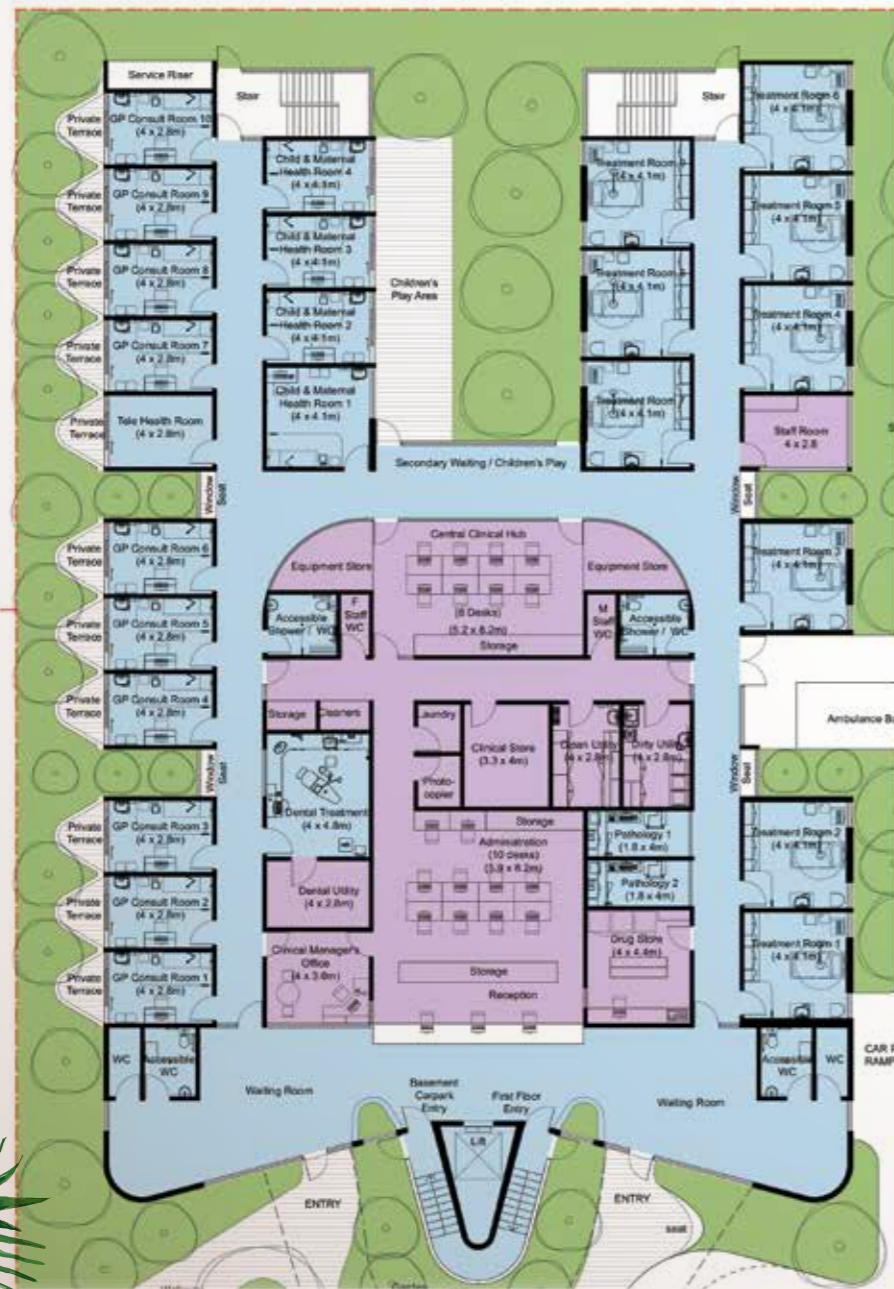


ENDEMIC LANDSCAPING

# PROPOSED FLOOR PLAN

Our vision is for world-class healthcare delivered in state-of-the-art facilities.

Ground Floor Plan



First Floor Plan





**BRAMS was the first remote Aboriginal Medical Service in Western Australia.**



# BUILDING A HEALTHIER FUTURE

## SERVING THE COMMUNITY

### BRAMS in brief

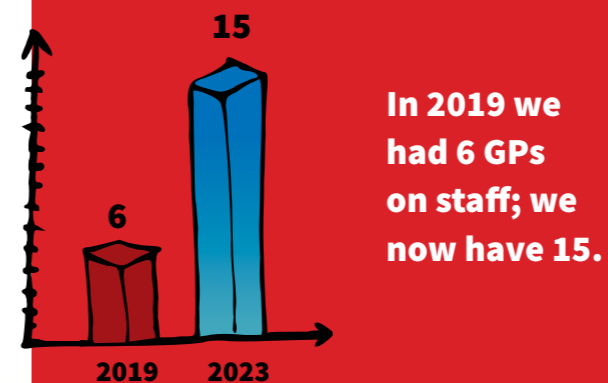
Broome Regional Aboriginal Medical Service (BRAMS) is an Aboriginal Community Controlled Health Service which has been caring for the Broome community for more than 45 years. When we first opened our doors in 1977, BRAMS was the first remote Aboriginal Medical Service in Western Australia.

Today, we provide a full range of primary healthcare and wellbeing services to Aboriginal and Torres Strait Islander people in the Kimberley, including NDIS, Aged Care, and domestic and family violence services.

We employ an experienced team of professionals who work together to improve health outcomes.

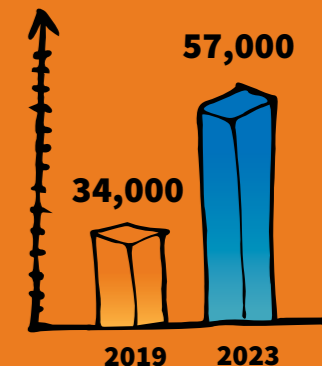
BRAMS has undergone extraordinary growth in recent years. A new clinic will enable us to continue to grow and meet the health needs of the local community.

#### DOCTORS



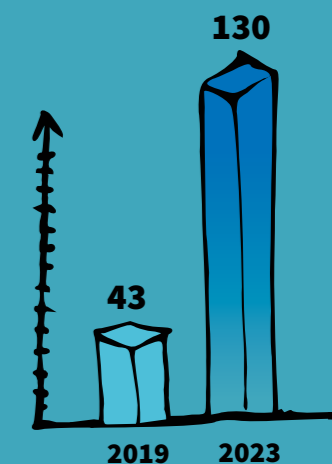
#### PATIENTS

In 2019, we provided 34,000 episodes of care; this has now increased to 57,000 episodes of care annually.



#### EMPLOYMENT

During that time, our staff numbers have more than **TRIPLED** from 43 to 130 full-time employees.





HOW YOU CAN MAKE A DIFFERENCE ?



Broome  
Regional Aboriginal  
Medical Service

# BRAMS needs your help.

In addition to funding from the Commonwealth and WA governments, we are also seeking your support to help turn our vision into reality.

## Investing in a new clinic will ...

### PROVIDE

Provide modern, fit-for-purpose health facilities for Aboriginal and Torres Strait Islander people in Broome;

### IMPROVE

Improve privacy, increase space, and offer better amenity for patients and their families, including those in wheelchairs;

### LEAD

Lead to better health and wellbeing outcomes for our patients; and

### GROW

Enable BRAMS to continue to grow its service footprint to meet the needs of the local community.

## We are looking for...

We are looking for donors, partners, sponsors and ambassadors as we progress this very important work.

To find out more please contact...



08 9194 4800 or 0437 682 231



ceo@brams.org.au



www.brams.org.au



facebook.com/BROOME.BRAMS

instagram.com/brams\_6725/



2 Dora St  
Broome WA 6725



PO Box 1879  
Broome WA 6725

**BUILDING  
A HEALTHIER  
FUTURE**



*We care for you*

**#HELPBUILDABETTERBRAMS**



**Broome**  
**Regional Aboriginal**  
Medical Service

**08 9194 4800**

**0437 682 231**

ceo@brams.org.au

2 Dora St  
Broome WA 6725

PO Box 1879  
Broome WA 6725

[www.brams.org.au](http://www.brams.org.au)

